



On Track
Community
Programs



Annual
Report
2006 - 2007



The Vision

On Track Community Programs will continue to expand its services to meet the growing needs of people who are disadvantaged. On Track will provide adequately resourced and professionally managed services that deliver best outcomes for consumers and the community whilst working in partnership with funding providers.

The Mission

On Track Community Programs will provide a range of community based support services for people experiencing mental illness, disability or extreme disadvantage. The aim is to improve an individual's quality of life and assist them to participate more fully within the local community.

Objectives

1. To develop, provide and establish a range of support services such as employment assistance, supported accommodation, rehabilitation, counselling and other such supports to people who are living with a mental illness, disability or who are homeless and/or suffering extreme disadvantage either socially or economically.
2. To ensure On Track Community Programs plays an active role in promoting the valued status of people living with mental illness, disability or extreme disadvantage.
3. To reduce the amount of homeless people on the North Coast of NSW by providing a range of crisis accommodation services such as brokerage, case management and supported housing.
4. To provide supported accommodation within a co-case management framework to families who are at imminent risk of having their children being taken into alternate care.
5. To provide services that are of the highest quality and work within contemporary psychosocial boundaries and frameworks.
6. To ensure staff are appropriately skilled and trained and with professional supervision available to them.

On Track – who we are

On Track is a not for profit community organisation funded by various government departments to provide support services to people who are experiencing disadvantage. Our organisation was initially established in 1986 (incorporation 1993) by concerned community minded people, health professionals and carers. These people were alarmed with the lack of support services and housing options for young people living with a mental illness. Since its inception On Track has gone through significant change, not only in name “originally called the Tweed River Valley Fellowship” but in purpose and direction. On Track broadened its target groups to include homeless services and services for people with complex disabilities, in response to requests from carers to provide services to people who had complex needs. Originally we commenced with a focus on the Tweed community, however a change within the non government sector, saw the introduction of competitive tendering and the trend towards funding larger metropolitan based services. To meet this challenge On Track met with other NGO's on the North Coast to develop plans to become one locally grown NGO servicing the entire region. After extensive consultation with stakeholders, consumers and carers within a strategic planning framework, it was decided to merge all the organisations involved under On Track Community Programs Incorporation.

On Track- What we do

On Track has consolidated its programs to provide four key areas these are-

Mental Health

On Track Mental Health Psychosocial programs provide opportunities for people who are disadvantaged and who may experience disability as a result of a diagnosed mental illness. These programs provide resources and activities that help to strengthen the social and living skills necessary to create stability and independence in peoples' lives. Tailored programs and a supportive environment offer consumers the opportunity to develop and enhance skills, which may assist in their process of recovery. Programs are facilitated by On Track staff and consumers or in collaboration with other services and take place on site at On Track, in local community services, and on organised community outings. The service works within the parameters of social inclusion and focuses on the recovery model of rehabilitation

Disability

The On Track Disability Program provides a range of supported accommodation options to people living with various disabilities across the North Coast. On Track currently provides a suite of programs from high support for people with complex needs to drop in support for people living in their own homes. We value all input and actively encourage service users to participate in decision making in order to enable them the opportunity to reflect their opinion of meaningfulness and to inform them of opportunities that exist within their community.

Employment

The On Track Employment Program focuses on the individual needs of people who have identified aspirations to access employment or further educational and training opportunities. We aim to assist persons with a disability (moderate to high support needs) to ascertain, develop and implement their identified pathway to employment, education and training or other meaningful learning opportunities to enhance a persons self worth and ability to access activities within the community. On Track has established linkages with TAFE (disability team), ACE, Southern Cross University and various Volunteering agencies. These linkages and relationships are utilised to ensure the best outcome for the participant and the program.

Housing and Homelessness

Assistance to gain emergency temporary housing, gaining access to the private rental market , tenancy training or purchasing your home., these are just some of the services provided by he Housing and homeless program. The case management assistance provided recognizes the issues that can surround disadvantaged/vulnerable families within our community. Through this program, statistics have demonstrated that families experience a range of issues such as domestic violence, parental drug and alcohol misuse, parental mental health issues, a lack of extended family or social supports, parents with significant learning difficulties or and intellectual disability; and or child behavior management problems. It recognizes these problems arise from lack of support and guidance, low self esteem, financial issues or peer pressure. Flexible support is offered to assist clients address these issues whilst finding secure accommodation.

The Chairpersons and CEO Report

On Track is very proud of its achievements this year and has great pleasure in presenting the Annual Report to you as an organisation that provides services from Tweed Heads in the North to Coffs Harbour in the South.



As an organisation we have taken significant steps both strategically and operationally. The implementation of a strategic plan was to merge three organisations that have similar cultures and philosophies, all were funded to provide mental health support services under the NGO Grant Program through the North Coast Area Health Service. After considerable planning the merger took place with the full support of the Area Health Service and we acknowledge particularly support from Chris Crawford, Chief Executive Officer North Coast Area Health Service and Richard Buss Director of Mental Health.



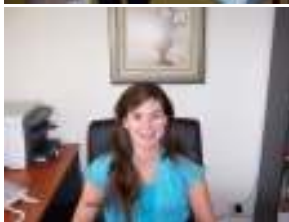
On Track Community Programs has completed the long awaited merge with our colleagues. This has seen On Track become one of the leading providers of mental health, disability and homeless services on the North Coast. Whilst change is never easy it is in today's society inevitable. We are delighted that On Track consumers accepted and embraced the change. The dedication of the staff is admirable in ensuring that all support provided to consumers did not decline whilst the necessary changes were taking place.



The cost efficiencies that will be gained by the merge will be put directly back into support provision so that the consumer receives the benefit of our merger. The merger has enabled On Track to competitively tender for larger programs that we would previously been excluded from because of our size and our inability to cover a sizable geographic region.



As with all growth and expansion, planning is paramount to the success of a well timed and coordinated operation. We are aware of the many planning meetings needed to occur across the sites and programs so that all service provision is consistent. We are grateful to all of the senior team members who travel often to ensure that communication is kept personal. We acknowledge the need to travel has now decreased with the implementation of our new networked Information Technology system. This would not have been possible without the submission written by Cliff Hawkey and the skills and expertise of Carlos Torres and John Chudleigh who have implemented and established the new IT systems.



In 2006, the Premier of NSW the Honourable Morris Iemma, released the Government's vision for the future of NSW (A New direction for NSW), identifying their commitment to improving services to the most vulnerable ,

including people with mental illness, disabilities and those who are homeless. These people are the priority target groups identified in 2000 by the On Track Board and staff through in our Strategic Plan.

Throughout the Strategic planning process On Track has remained focused on these priorities. In particular the need to expand its services to meet the demand on the North Coast. This has resulted in a significant investment in tenders and applications to various Government funding providers, with On Track now receiving support from several new government departments, agencies and funding streams.

Some of these include, NSW Health for the provision of HASI 4A services in the Tweed/Byron and Richmond areas, The Commonwealth Department of Health and Aging for support in the form of the Day to Day Living Program in the Tweed/Byron area. The Department of Family and Community Services and Indigenous Affairs (FaCSIA) funding for Respite care for people with a mental illness in the Far North Coast and North Coast areas. We are to commence under FaCSIA the Northern Kids Care project through the Mental Health Community Based Program for an innovative project for Children of parents with a mental illness, one of the only projects of its kind in Australia to date. On Track has received support from the Department of Ageing Disability and Homecare, to project manage the construction of a purpose built dwelling for people with high physical needs. Currently a house has been identified for purchase and tenders are going out to have the property modified to meet the Disability Service Standards and to ensure that the individual needs of the clients are taken into account. The property is located in a great area with views and has a wonderful home atmosphere. On Track acknowledges the Department of Ageing Disability and Homecare in their new commitment to a better future for people with disabilities through the Stronger Together document.

Over all we are pleased and excited in the direction On Track is taking, this year will see the development of a new strategic plan that will take us into the next phase of development. This will be led and given direction by the extension of our Consumer Carer Community Advisory groups (CCCAGS that will be established to ensure consumer participation . We wish to thank all of the wonderful staff that show dedication, professionalism and passion for their chosen career. It looks like we're staying On Track!

John Bedford
Chairperson

Leone Crayden
CEO

The Board Members



Chairperson

John Bedford

Retired Minister, Founding Member St Cuthbert's Church,
Founding Member Lindisfarne Anglican School



Vice President

Ken Lee

BA Education,
BA LLW Practising Solicitor
MBA



Honorary Secretary

Bob Young

Retired General Manager Boral GAS



Honorary Treasurer

John Storey

General Manager St Josephs Community Centre
BA Counselling



Ordinary Members

Ron Lewis

Retired Police Officer
Current Board member Twin Towns Services Club



Trevor Shearn

BA Community Services
Currently Manager
Tweed Community College and Apprenticeship Scheme



Navaya Ellis

BA Communication
Certificate 4 Disability
Currently employed Disability Services (DADHC)



John Maloney

Practising Chartered Accountant



The Disability Program

The year in review has seen further growth within the On Track C disability program along with consolidation of our existing services.

On Track now provides a range of supported accommodation programs to a number of clients residing predominately in the Tweed area. Our goal is to support clients to live as independently as possible, retain their dignity and stay connected to their community. The Leaving Care program funded by DADHC also provides service for three clients living in their own homes.

Early in the 2007 year it was identified by the Program Coordinators, staff and management that there was a need to consolidate some of our programs and reconfigure locations of staff and clients. This would ensure greater compatibility, choice and better skills match of staff to client needs. To this end we were given approval to reconfigure and modify one property to enable clients of similar age and support needs to live in a more suitable location.

We thank the clients, staff and carers for their faith in this new model and are now confident that it has resulted in positive outcomes for all.

The growth in services has also been reflected in staffing levels. The disability service now employs twenty five permanent full or part time staff and nine casual staff. Further recruitment is currently being undertaken to complement casual staffing levels. An emphasis this year has been to create core teams in each of the service facilities.

I would like to take this opportunity to thank in particular the three team leaders who are responsible for the day to day operations at each setting. Their commitment, skills and leadership over the year has been exemplary. I would also like to thank all staff working in the disability program for their continued commitment and efforts that they bring to their work. The performance of their duties is indicative of the value they place upon people living with disabilities.

Brad Barker Disability Coordinator



The Employment Program

On Track Employment manages two employment focused programs, the Disability Employment Network (DEN) which is funded by the Department of Employment and Workplace Relations (DEWR) and the Transition to Work program (TTW) which is funded by the Department of Ageing, Disability and Home Care (DADHC).

Our DEN program commenced operations in July 2005 when DEWR allocated a client load capacity of eleven. Each year the allocation has grown, due to On Track's ability to meet the key performance indicators required of the program and today we service thirty five clients. This program aims to assist people with disabilities, who are referred by Centrelink, to find and keep paid employment.

The DEN program is voluntary for clients and time limited, therefore we ensure that those who enter the program want to work, are able to access transport and have stable accommodation. Once in the program our dedicated staff assist clients with job preparation skills (resume writing, completing job applications, interview techniques, job search techniques etc) and training on the job.

The TTW program aims to assist school leavers who have a disability develop the life skills required to integrate within the community and ultimately obtain paid employment. At this stage TTW is a small program with four clients who are learning how to utilise their social competencies, how to manage daily living skills (banking, budgeting, learning to drive, accessing social and recreational activities, how to search for work and completing paid or unpaid work experience.

Both programs have had excellent outcomes in 2007. The DEN program, has passed stringent Audit requirements and placed 15 people into paid employment, while the TTW program has made a significant difference to peoples lives with two participants on their way to obtaining their drivers licence. Outcomes achieved reflect the commitment and energy of staff who are to be commended for their effort and contribution.

Robyn Turner Employment Coordinator



The Housing Program

It has been another busy year for the Housing Program, with many good news stories emerging, including the following-



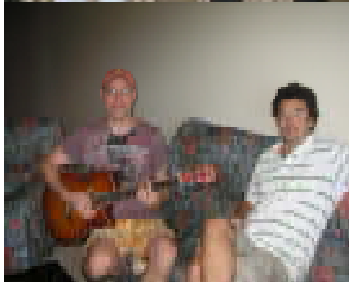
From Homelessness to Home Ownership

Leasa came to On Track Housing Program (OTHP) homeless, declared bankrupt with four children. She was determined to get herself out of this situation, so the Housing Program placed her into one of their subsidized Supported Accommodation homes where she endeavoured "to further her education in aged care. Lease then sort employment with two aged care facilities, took all the graveyard shifts because it brought in the most money. Leasa saved every cent she could to put a 10% deposit down on her first home. Just this month it all came to fruition. Leasa is now a proud owner of a 3 bedroom + study townhouse. Congratulations Leasa!



Disadvantaged clients now have a direction

With assistance from On Track Housing Program staff, our client's dream of having stable, permanent accommodation is now a reality. Over the last Financial Year the Housing Program Staff have housed a number of people, the following are just a few:-



John and Neil were residents of "Railway House", an 8-12 month accommodation model for males located in Murwillumbah. Both clients came to On Track Housing looking for assistance with finding permanent housing. They both understood that it was nearly impossible to afford accommodation by themselves in the private rental market. So with perseverance they were able to obtain this two bedroom unit overlooking Kingscliff Beach. How lucky are they? The guys are in their element, great home, great friendship and close to all Kingscliff facilities, shops, doctors, parklands, TAFE etc. Congratulations guys!



Jay and Dennis

Jay and Dennis were referred to the Housing Program from the Department of Housing (DOH) after receiving a termination notice from their Real Estate Agent (owner wanted vacant possession) the unit was being sold. Jay and Dennis were temporarily housed at the Fairlight Motel until the Housing Program could assist Jay and Dennis find permanent accommodation in South Tweed Heads.





Wendy and Scott

Wendy and Scott accessed our service last Christmas under difficult circumstances. Both were living in their car while Wendy was trying to maintain her employment and look for permanent accommodation.

It took her months to finally secure a two bedroom unit at West Tweed which was also conveniently located close to her employment. Wendy has proudly furnished her home beautifully; the biggest expense was recovering an old lounge which she obtained from a second hand store.

"It looks great Wendy"



Janna & Jordan



Janna and Jordan are Tweed Residents. Janna commenced seasonal work away from the Tweed area then found it difficult to come back once the work finished. Graeme assisted Janna with applications to Real Estate Agents and inspections of properties, till finally both Janna and Jordan were accepted for a unit in Tweed Heads.



First Friday of Every Month Society (FFEM's) is a local group of ladies who meet on the first Friday of every month at Chilli T's for lunch, a bit of fun and fund raising. They are committed to helping disadvantaged children within the Tweed Community. Over the last twelve months the ladies have generously donated to the Housing Program, food, clothing, toys and Christmas presents to disadvantaged children within our Program.



Without charities like FFEM's it makes it impossible for us to provide these items in our strained funding of \$101,000 per year.

I would like to take this opportunity to personally thank Cheryl and Graeme for all their dedication and hard work over the past 12 months, the passion you both have to support disadvantaged people within the Tweed is extraordinary and our world and community is certainly a better place with you in it.



Great outcomes have been achieved with 273 Adults and 221 Children been permanently housed.

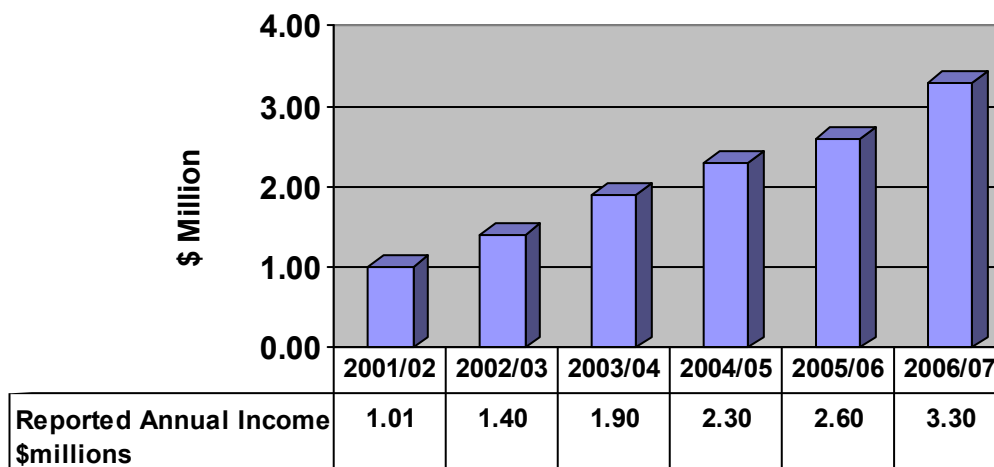
Great Work!!!!

Tania Wilkinson Housing Program Coordinator

The Finance Report

2006-07 was characterised by continued steady growth and consolidation at On Track. A snapshot of On Track's financial position for previous years compared to the 2006-07 financial year is reflected in the following graph

Total Reported Income



The greatest challenge facing the Finance Department during 2006-07 was to achieve a smooth transition of business in the merger with MHARS and MOOMBA by July 1, 2007. All financial processes, policies and procedures were put under the microscope by Rochedale Accountants in a comprehensive pre-merger review. This exercise proved to increase confidence in On Track's financial systems and capacity for both the MHARS and MOOMBA communities.

We took the opportunity presented through the merger process to upgrade our financial management technology in order to improve our ability to meet the requirements of our expanded services and resources under management.

We look forward to another busy and productive year in 2007-2008 as we strive to meet the challenge of providing accounting consolidation to diverse operations in geographically separate regions. I would like to take this opportunity to thank our Management Committee, General Manager, Leone Crayden and staff for their ongoing support in achieving our shared goals.

Christine Thomas
Finance Manager

Property Management



This year has seen continued growth and consolidation between On Track Programs and property management. The property management portfolio has doubled with the merger of On Track. To meet this planned need, June saw the training of a new property officer. Work flow charts, job descriptions, and TMS training occurred. With this merger, a cleaner and handyman were also appointed to maintain our properties to OCH Registration standards. Both have been very productive and necessary. As the service expands, staffing levels will need to be assessed and increased.

We now manage over 100 properties for government departments and agencies and have a number of landlords within the private sector providing housing for our clients and generating a management income. The newly amalgamated property management portfolio extends from Tweed Heads, through Mullumbimby, Byron, Lismore and Coffs Harbour. The property management software TMS has proven invaluable in recording data, statistics and producing reports particularly for the annual data collection requirements and our OCH reports. With the amalgamation, TMS has collated tenant and property data for our 100+ properties. This programme is in use across the entire network of the new On Track Community Programs Inc.

Special projects completed this year include the upgrade of two properties to accommodate disability clients and their needs and the office upgrade at Megan Street, from garages to offices and staff amenities. As part of our drive for efficiency and best practice, energy saving devices have been installed at all OTCP properties with the free installation of new light bulbs and water saving devices. All electricity usage is now under a company contract with Country Energy to further increase cost saving

During the year cyclical maintenance continued with upgrades to worn carpet, and replacement of patio structure from previous termite damage to Blundell Boulevard, repainting of rooms in various properties, and general replacement of drainage pipes, guttering, and verandah supports. Other projects are earmarked for 07-08 financial year

Maz James Property Manager



Acknowledging the Past and Embracing the Future

In July 2007, a full day was held to acknowledge the past and embrace the future of a newly formed organisation. There were many friends of all the organisations that came together to talk about where we began and to give their insights into the future of the new look On Track. For many the day was a chance to say good bye to their organisation and acknowledge the work of the retiring Boards of Management.



Northern Kids Care

The Caring for Kids project was spearheaded by the Rotary Club of Coffs Harbour City to help meet the housing needs of disadvantaged families living in the Coffs Coast especially those affected by parental mental illness. Rotary is working in partnership with On Track Community Programs Inc, Community Housing Mid North Coast Inc. and has the preliminary support of the Coffs Harbour City Council. The project's overall aim is to increase the resilience and social connectedness of children of parents with a mental illness



Community Development

In November 2006, On Track hosted a dinner for local business groups, employers, service providers, carers and members of the community with Mr Allan Jones as the guest speaker. The theme of the night was "Good Mental Health Making Good Business Sense". It sought to highlight the importance of maintaining good mental health in the workplace through speakers focussing on ways 'mindful employers' could integrate strategies into their workplace to support and assist their employees. Ticket sales and feedback from night identified it as a great success.



Crossing the Bridge

On Track assists the development of peer support programs and actively supports consumers who wish to talk about their own recovery experiences by the "Crossing the Bridge Program" originally developed by consumers to promote recovery and rehabilitation while informing the community about Mental Health issues. Consumers train as speakers and articulate their journey in a variety of venues such as schools, service clubs, in-patient units.



Cancer Council—Smoking cessation

On Track has been funded by the Cancer Council of NSW to train facilitators to assist in QUIT programs and Nicotine Replacement Therapy.

MHARS - now known as On Track Richmond



The 2006- 2007 year saw the successful amalgamation of Mental Health Accommodation and Rehabilitation Services Inc. (MHARS) with On Track Community Programs Inc.



This amalgamation has given On Track a regional presence and increased the organizations mental health services. These now include:

Crisis Accommodation

A 7 bed Crisis Refuge staffed 24/7.



Residential Rehabilitation

A 5 bed Residential Rehabilitation Facility staffed 24/7 called Mandara with an additional 5 beds in 2 satellite house attached to this facility.



Housing Accommodation Support Initiative

4 Packages

Supported Accommodation

16 Supported Accommodation Properties in Lismore.

10 Supported Accommodation Properties in Ballina.

4 Supported Accommodation Properties in Evans Head.



Psychosocial Rehabilitation and Vocational Programs.

Day Programs and Activities.

During the year 190 consumers accessed these services



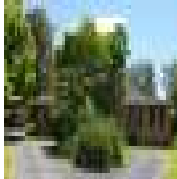
I would like to thank all MHARS staff for their support and commitment in providing the best possible services for our consumers, especially during a year when we have undergone such huge change. I look forward to our new partnership with On Track and the opportunities that will afford same.



Ann Bowen Manager Lismore

MOOMBA - now known as On Track Coffs Harbour

On the 1st of July 2007 Moomba Accommodation Services amalgamated with On Track Community Programs here at Coffs Harbour. A lot of energy was put into initiating new systems, auditing, finance management and IT. The staff endeavoured to adjust to the alterations which occurred and assisted admirably with the 'Moomba' to 'On Track' culture change. The present Mental Health Accommodation Program supports 43 consumers, 20 in eight residences leased from Community Housing Mid North Coast, Department of Housing and Area Health Service, and 23 outreach consumers residing in privately rented accommodation.



Staff

The Mental Health Program has 4 senior support workers and 1 manager, with the addition of a casual COPMI worker, 2 consumer domestic staff and 1 consumer maintenance worker.

Service Development

The Raleigh Street premises are continuing to serve as offices and a drop in centre for consumers and will be repaired and upgraded in readiness for the 3 new programs being developed for the Coffs Harbour program. Modifications are needed to house up to 5 new staff and service up to 20 consumers per day, as well as park up to 15 cars.



Resource and Recovery

The Hospital run 'Living Skills' program is being transferred to On Track along with a group presenter. The present program services up to 12 consumers to which On Track can add a similar number. Program additions will include, Psychologist and GP visits, agency talks and a volunteer program.



Northern Kids Care

Funding has been given to begin a program aimed at children of mentally ill parents (COPMI). Rotary, Community Housing MNC, Burnside, Brighter Futures, Area Mental Health and DOCS are some of the partners in this early intervention program. They will assist a new On Track Coordinator to improve the lives of children through housing, education, peer support and workshops.



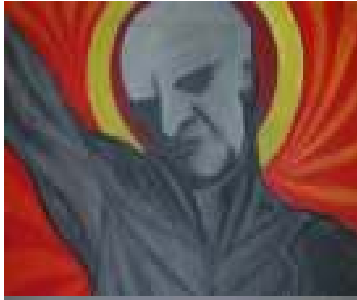
Respite Program

Funding has also been given to provide Respite services for mental health Carers. Care-link Australia will broker the services to On Track for respite in the carers home, consumers home and other arrangements that are to be formulated in the future.



On Track Coffs Harbour looks forward to significantly expanding our capacity and services to Mental Health consumers in 2008.

Michael Jenner Manager Coffs Harbour



The Mental Health Program

The On Track Mental Health Program at Tweed Heads continues to provide supported accommodation in a range of settings including a 7 bed Hostel, 45 beds within our Outreach Program and this year On Track was successful in gaining funding to begin support to 4 consumers within the Housing and Support Initiative Program (HASI). This program provides high levels of support to clients with up to 5 hours of “face to face” contact from support workers. There have been 33 new consumers entering On Track’s hostel this year with up to 10 dedicated staff led by team leaders Louise Muir and Kellie Green who work tirelessly to ensure all consumers ‘Recovery Plans’ are maintained.

The Mental Health Program Resource and Recovery Centre known as “The Connections Centre” has been a vibrant and energetic place this year with Programs running that include a weekly art group, jewellery making group, a music group that continues to develop its skills as a rock performance band, daily lunches, outings, personal development groups and prevocational work training led by the Team Leader Karen Mules.

A new initiative in 2007 was to invite two local psychologists to run 2 half day in house clinics for consumers of On Track Community Programs and bulk bill for their services. This service has been extremely successful and closely ties in with our visiting psychiatrist who attends an in-house clinic on a monthly basis. These services have proved to enhance the quality of life for consumers due to the easy process of making appointments and the fact that both services bulk bill. In the past most of On Track’s Mental Health clients have found Physiologists appointments prohibitive because of the cost factor.

The strong link with Community Mental Health and the Inpatient Unit continues to provide a constant stream of referrals to On Track for both accommodation and rehabilitation and ensures that new consumers from the general public are informed of our services. The “Crossing the Bridge 2” program has been in operation this year facilitated by Zain Constantine and funded by the “Community Development Expenditure Scheme”. Zain has performed an excellent job in educating young people throughout the Tweed/ Byron district at high school lectures regarding Mental Health issues and the link to illicit drug use. The program has



been very well received by teachers and students and On Track Community Programs aim is to seek funding to continue this initiative.

There has been two major promotional activities held this year for both Schizophrenia Awareness week and Mental Health Awareness. October's Mental Health Awareness Dinner was a huge success with the event held for the purpose of raising awareness of mental health issues in the workplace. The event was a formal dinner with Alan Jones as guest speaker.

The On Track Mental Health staff continue to be a dedicated group of people who often put extra time into their work for training purposes and to ensure that consumers have the best quality of care that On Track Community Programs can possibly provide.

Lyn Gunn Mental Health Coordinator



Younger Person Mentoring Project



On Track has actively sought to employ and support younger people in our workforce as a strategy to address predicted workplace shortages due to the ageing population of our workforce. This will have implications for not only On Track but the community as a whole. It is encouraging to work with dedicated young people who are community minded, have a sense of social justice and have a strong desire to develop their careers in mental health and disability services. In the 2008 year will see On Track increase its commitment to this project by furthering the participants by one on one mentoring and external professional supervision. On Track has already benefited from this program through the successful development and implementation of Crossing the Bridge (2) a project aimed at high school kids with young mental health consumers and young workers talking to them about the risks of drug and alcohol abuse and the link with mental illness .



Another project that has been developed and implemented through our mentoring was the Cancer Council Grant for Tobacco use cessation through staff and consumer training and the provision of Nicotine replacement therapy (NRT). This was a consequence from one of the young staff members attending a NSW NGO Mental Health Conference.



Acknowledgements and Partners 2006-2007

On Track acknowledges the following individuals, agencies, teams, community members who have contributed to the successful delivery of community support services:

Tweed Valley Clinic staff	Elders Cabarita
The Good Guys South Tweed	Centrelink
Tweed and Bryon Lismore and	Richardson and Wrench
Coffs Mental Health teams	Coolangatta
Harvey Norman South Tweed	Tweed Shire Women Services
Lismore Mental Health team	Century 21
Tweed Chamber of Commerce	Department of Community
North Coast Area Health Service	Services
Tweed City Shopping Centre	Coolangatta Real Estate Agents
Department of Ageing Disability	Department of Housing
and Homecare	Walk on Water Surf School
Mental Health Coordinating	Office of Community Housing
Council NSW	Surfing Australia
Department of Community	North Coast Community Housing
Services	Rotary Coffs Harbour City
All Our Volunteers	Community Development Support
Department of Health and Aging	Expenditure Committee
DJ Stringer, First National	Twin Towns Services Club
Department of Family and	Seagulls Club
Community Services	The Tweed Heads Lions Club
Professionals Tweed	TAFE Kingscliff
Mental Health Branch	DADHC Behavioural Intervention
LJ Hooker Cabarita	and Support Team
Department of Employment and	Tweed Heads Community Health
Workplace Relations	Services
LJ Hooker Pottsville	Tweed Community Options
LJ Hooker Kingscliff	Mr Chris Crawford
D-Lish Food Supplies	Tweed Shire Council
Raine and Horne Tweed	Bugalwena
Dr Suchita Telang	Federation of Housing
Ray White Coolangatta	FFEMS
Solstice	BAM Promotions
Ray White Cabarita	
TURSA	
Elders Tweed	
ACROD	